

# Treasure Chest

*Box by Shala Kerrigan*



Table of Contents-

- Page 1- This page!
- Page 2- Instructions for assembly
- Page 3- Colored box base
- Page 4- Color box lid
- Page 5- Color liner base
- Page 6- Color liner lid
- Page 7- Blank box base
- Page 8- Blank box lid
- Page 9- Blank liner base
- Page 10- Blank liner lid

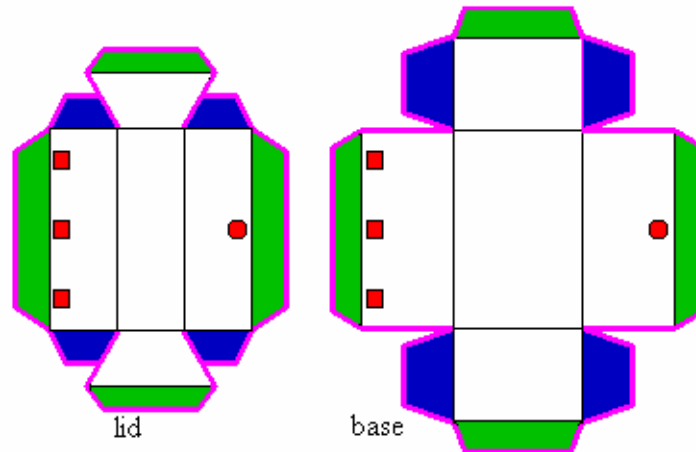
Copyright © Shala Kerrigan 2008  
First Publication March 2008  
Published in the United States

Page margins are set at .25 on each side, and .50 on top and bottom, if your printer won't handle that, scale to fit. 75% should turn out fine.

This is probably the biggest box I've ever done, and I don't know if I should call it a box or a model, it's 4 pages. You don't have to print all the pages in this ebook, just the pages you need to make the model. One base, one lid, one lid liner, one base liner. The first page has the index so you can decide which you are going to print. Assembly is the same. The default colored liner is pink skulls, since I'm sure some people don't want pink skulls, they could print the colored box lid and base, and then print out the blank liners to use as templates for decorative paper or to color themselves. The outside of the box, the base and lid, are printed on card stock, and the liners are printed on paper. Sorry to make it difficult, but that's how it turned out best for me.

Score all folds, and pre-fold before gluing.

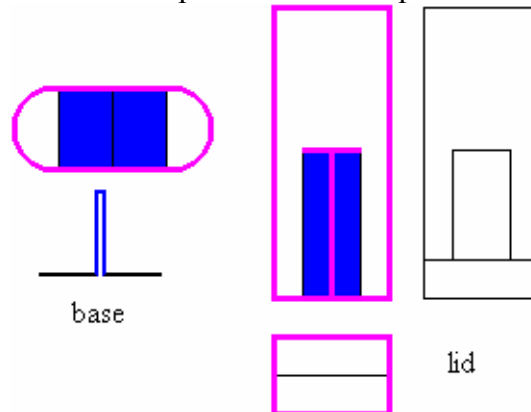
Diagram not to scale.



Pink heavy lines are the cut lines. Black lines are fold lines.

In this diagram, you see the basic box shapes, I've colored in the parts to explain them. The blue flaps get glued first, they glue to the sides they are next to form the box and lid. The green flaps get tucked to the inside and glued to help provide some strength. The red dots and blocks are placement blocks, the clasp and hinges get matched up and glue to those.

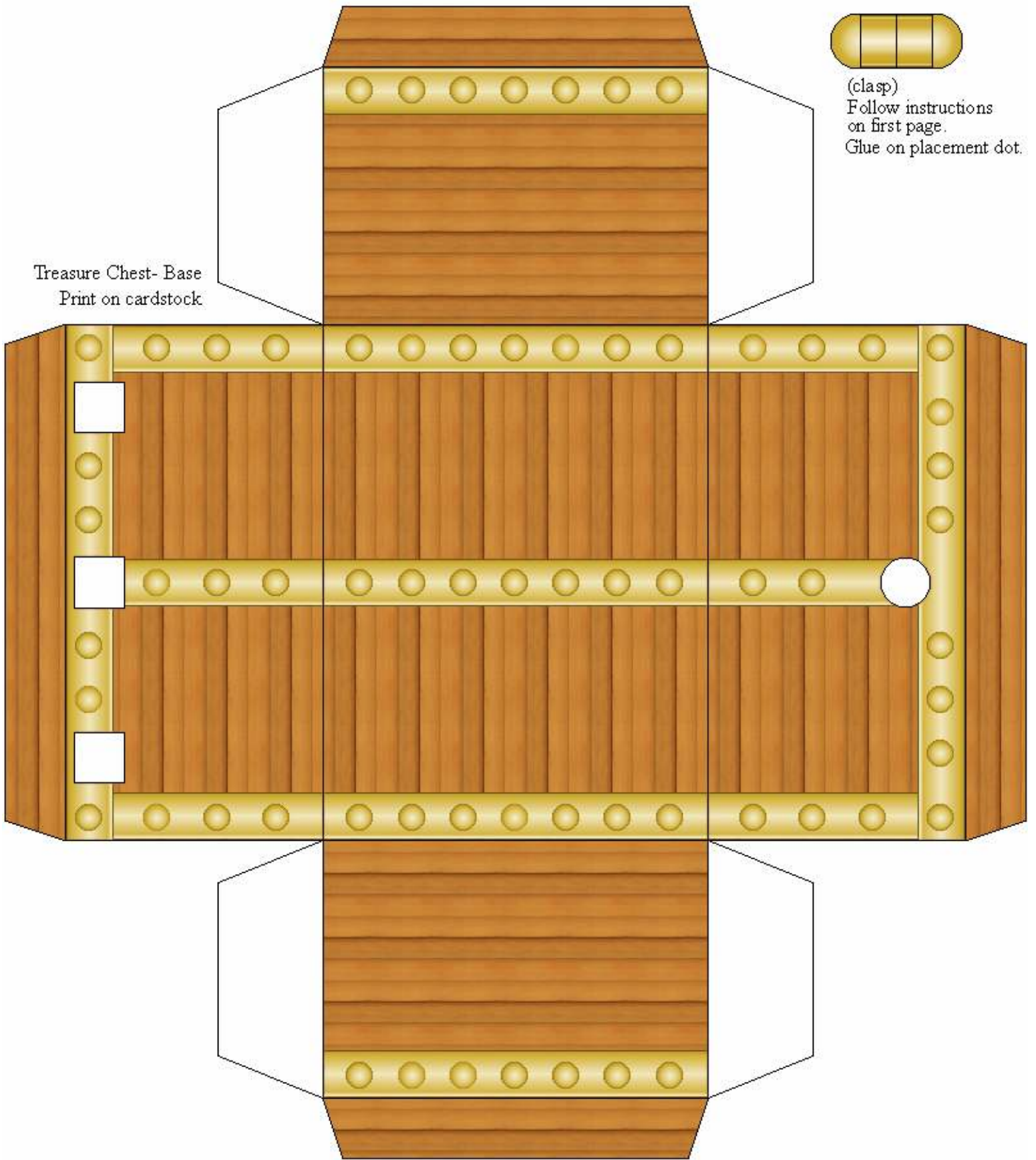
The clasp is made with 3 pieces.



The oval goes on the base, and you cut it out, and fold it in half, then fold the round ends up at to a 90 degree angle, forming an inverted T, glue the center of the fold, then glue the T to the box at the placement dot. The lid part of the clasp is a little trickier, I wanted something you didn't have to make a hole for, so you cut the T, then fold the pieces in and glue them, I suggest using a toothpick to spread the glue, then you fold the bottom part in half, and sandwich the two ends of the top piece in the fold, and glue that in place. Glue to box at the placement dot.

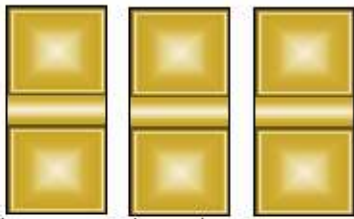
When you glue in the liner, I suggest gluing in the bottom part of it first, then gluing the outside pieces, or in the case of the lid, the center rectangle, then the two sides.

Treasure Chest- Base  
Print on cardstock

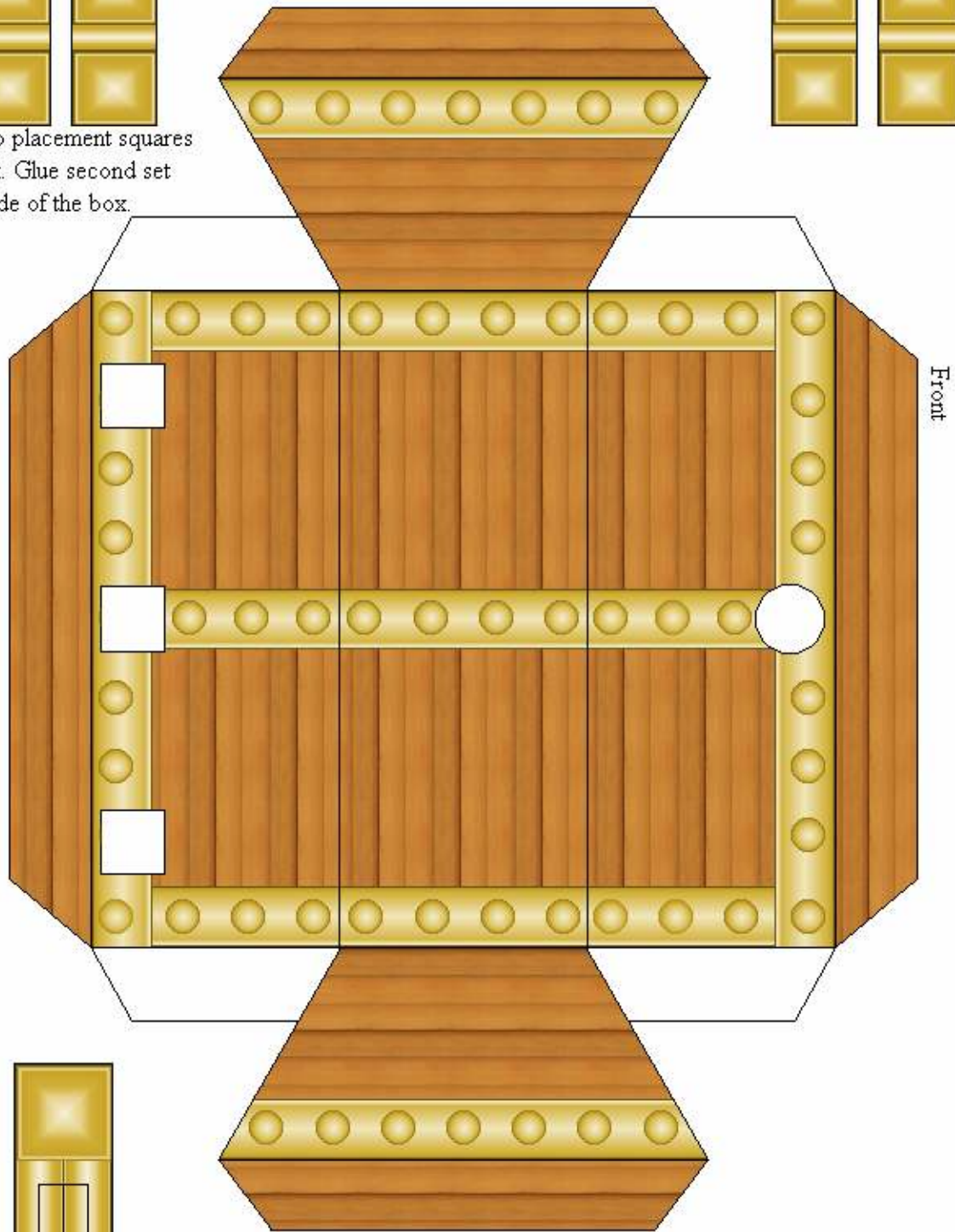
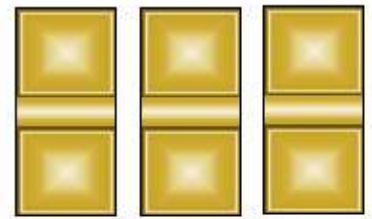


(clasp)  
Follow instructions  
on first page.  
Glue on placement dot.

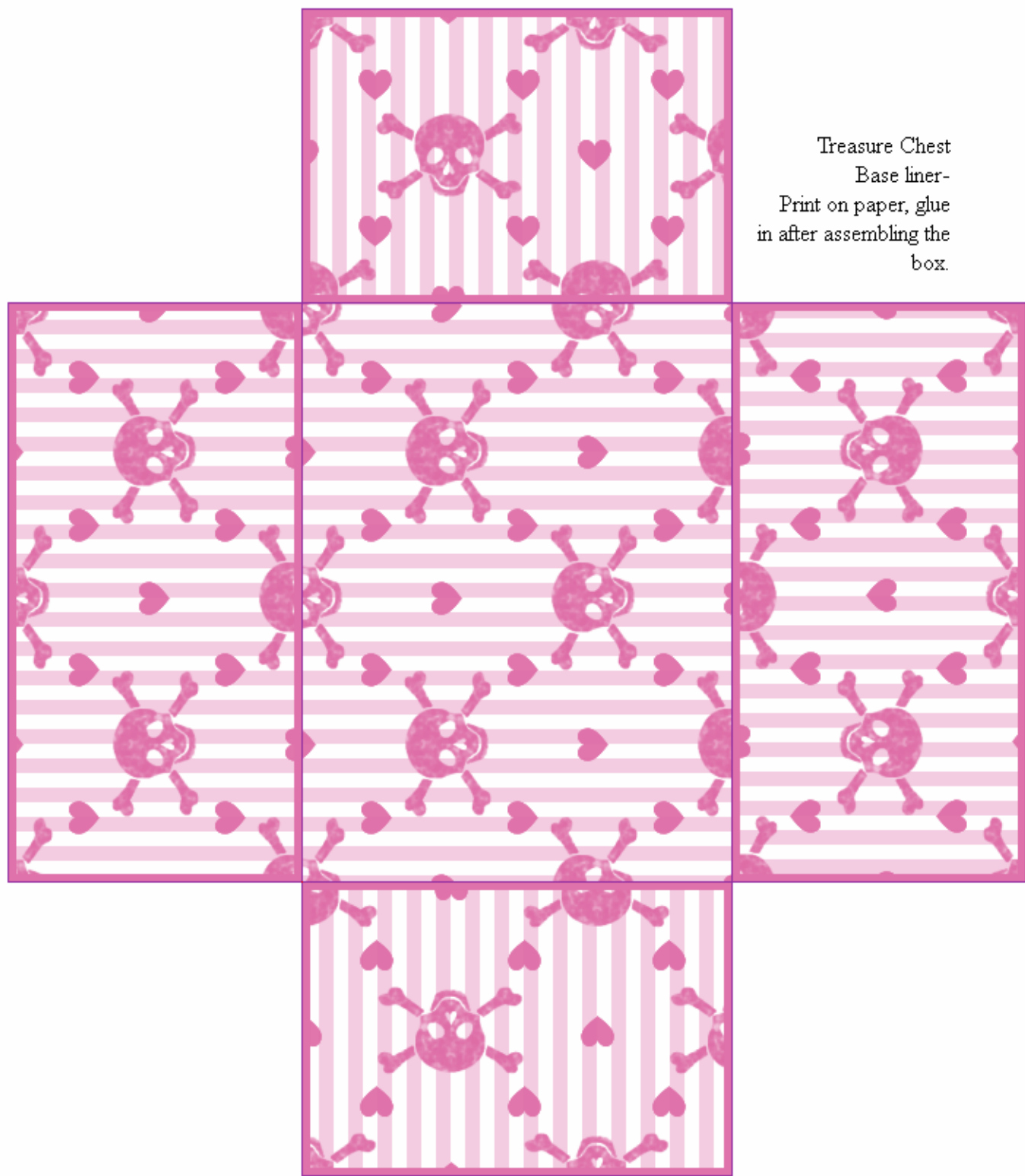
Treasure Chest- Lid  
Print on cardstock



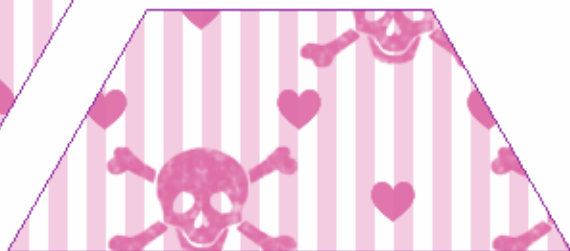
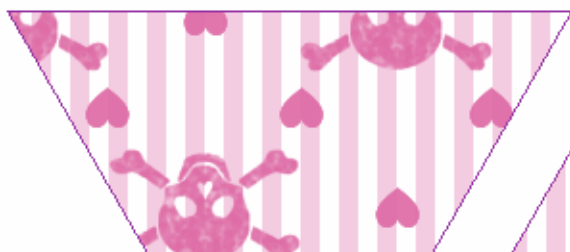
Hinges- match to placement squares  
on lid and box. Glue second set  
on the inside of the box.



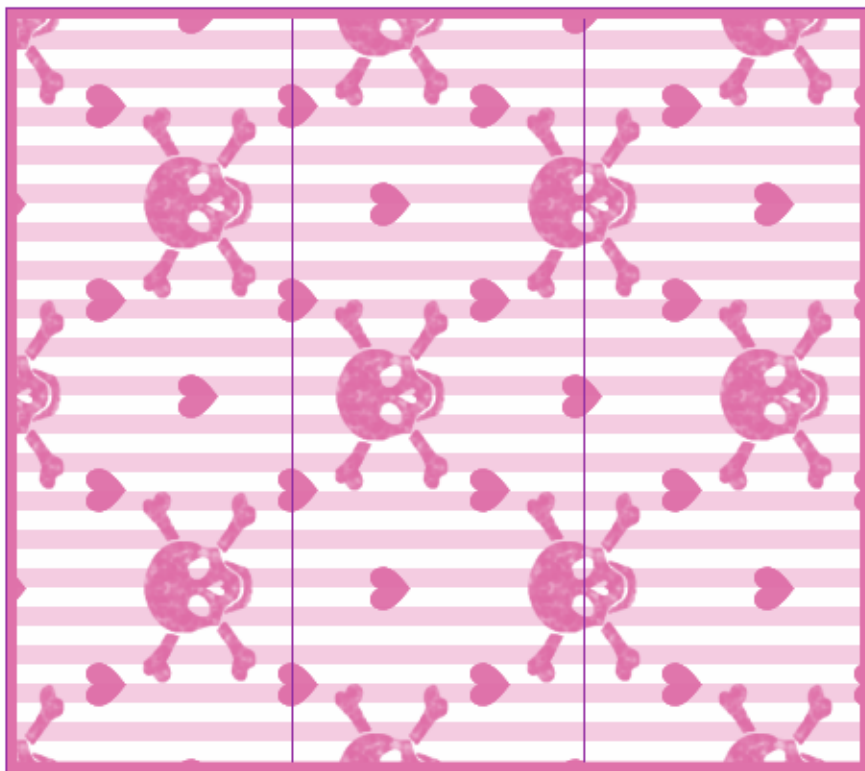
(clasp)  
Follow instructions on first page.  
Glue on placement dot.

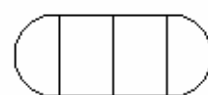
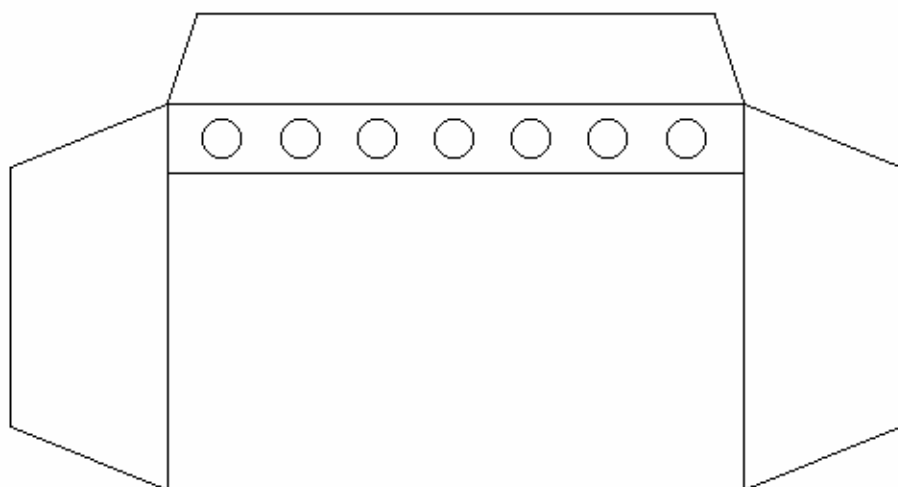


Treasure Chest  
Base liner-  
Print on paper, glue  
in after assembling the  
box.



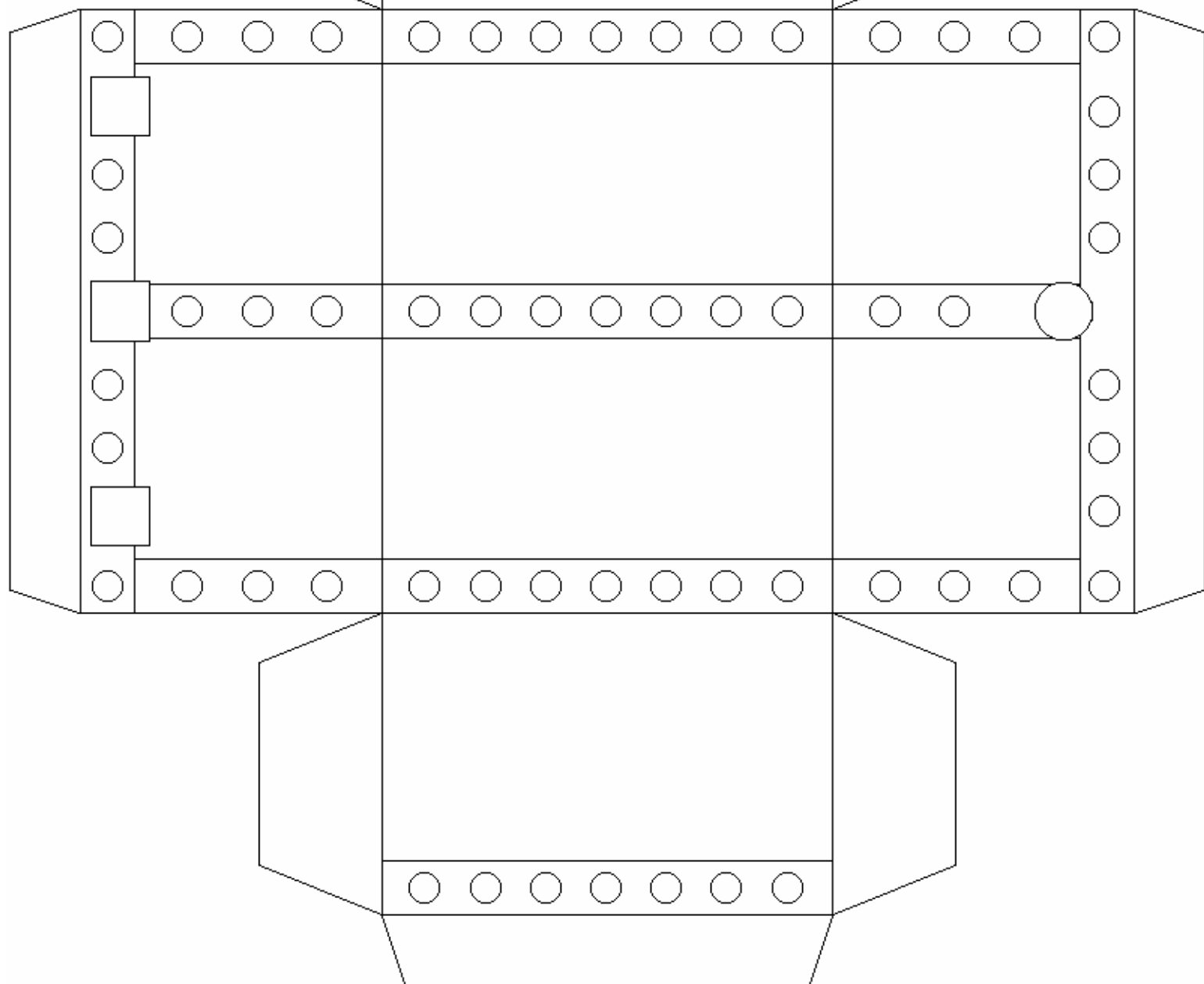
Treasure Chest  
lid liner-  
Print on paper, glue  
in after assembling the  
box.



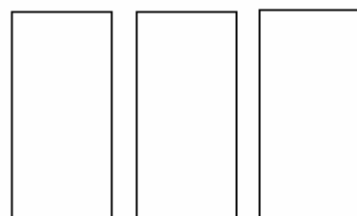
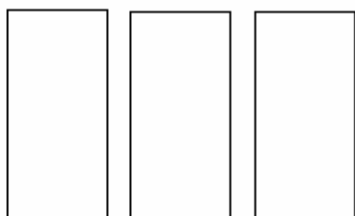


(clasp)  
Follow instructions  
on first page.  
Glue on placement dot.

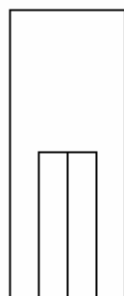
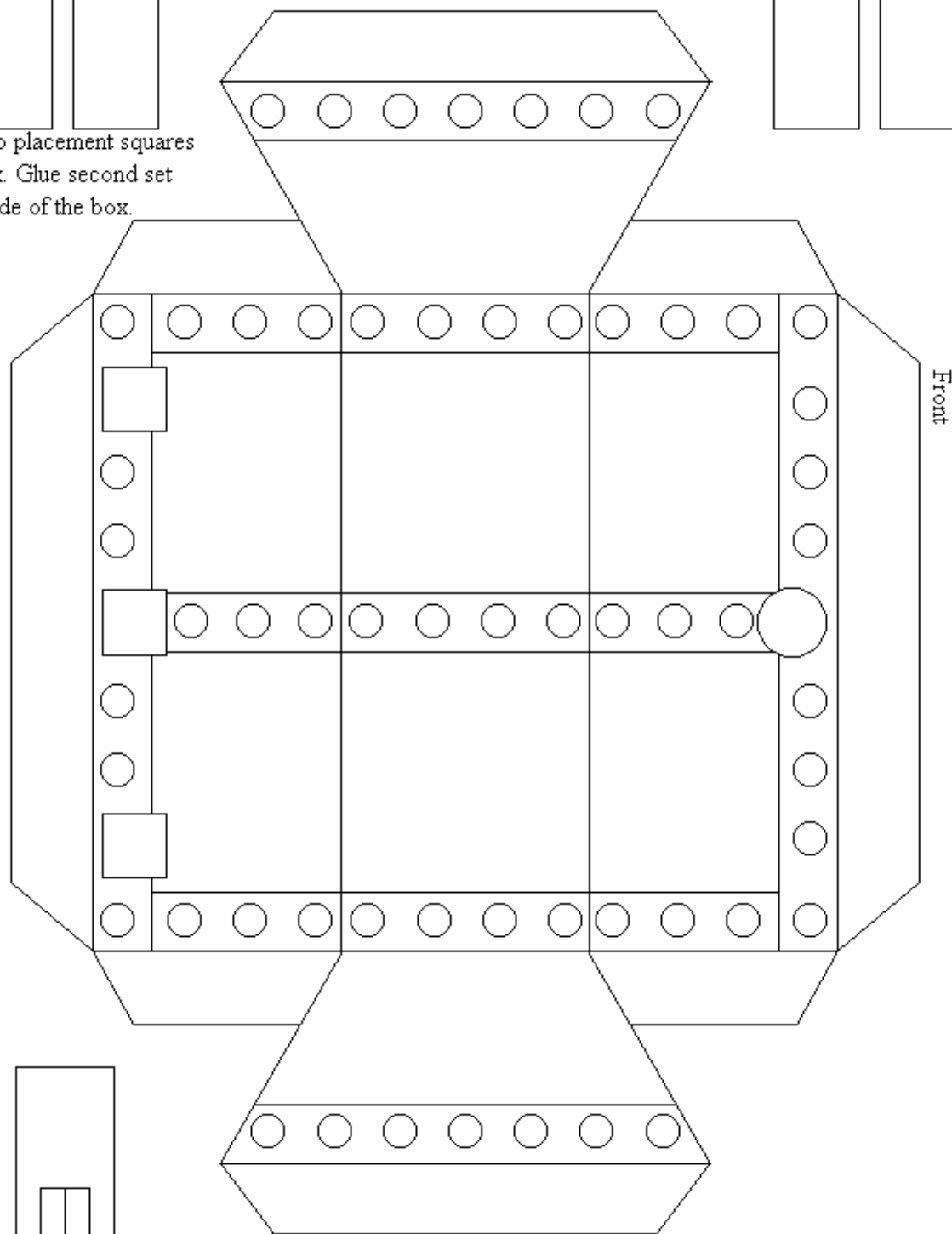
Treasure Chest- Base  
Print on cardstock



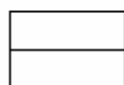
Treasure Chest- Lid  
Print on cardstock



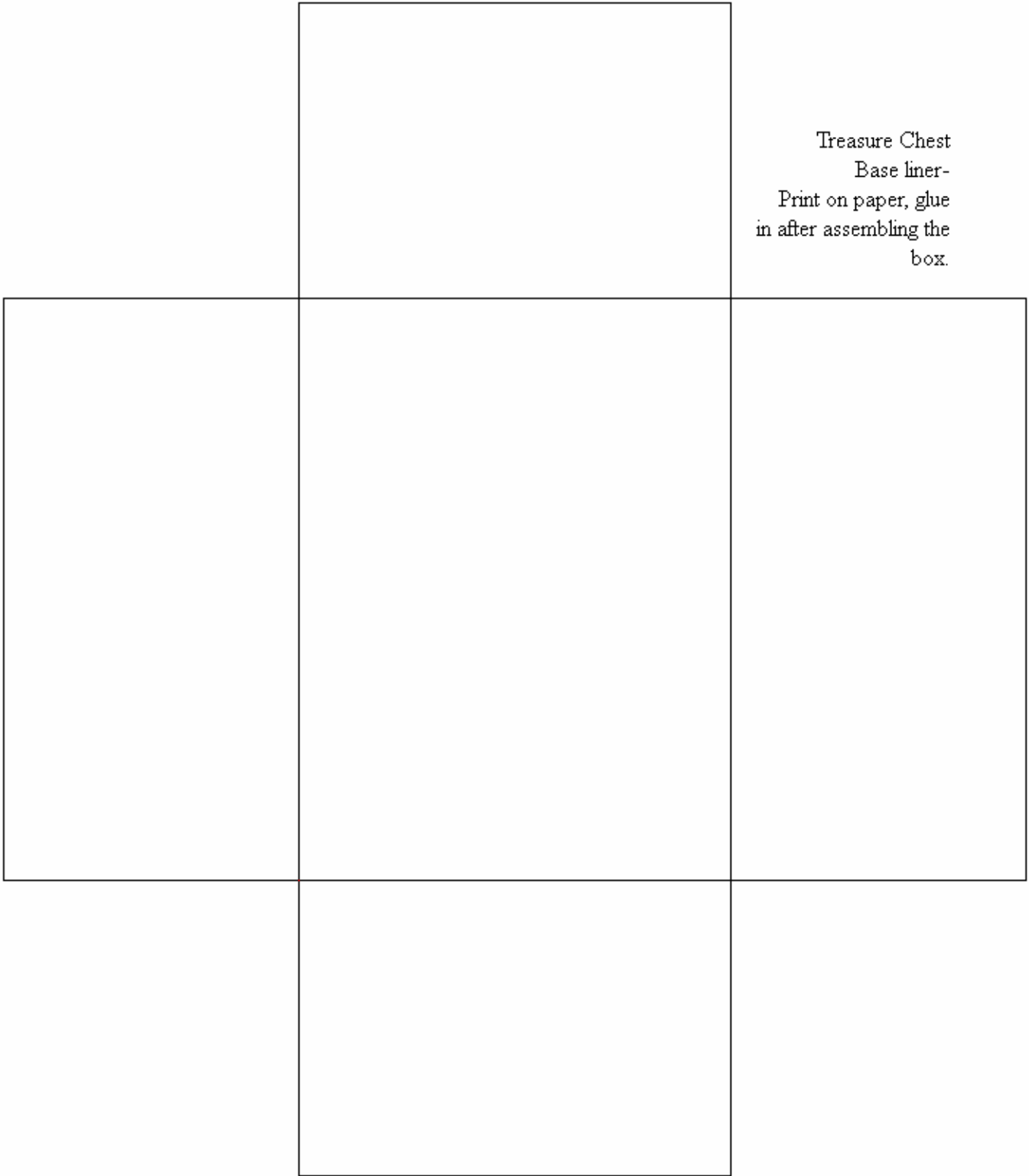
Hinges- match to placement squares  
on lid and box. Glue second set  
on the inside of the box.



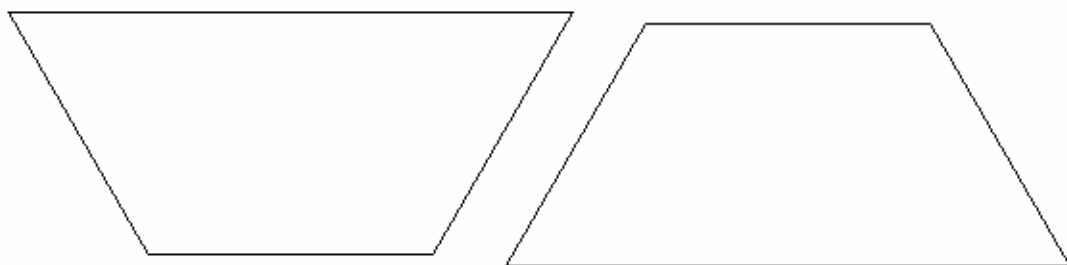
(clasp)  
Follow instructions on first page.  
Glue on placement dot.







Treasure Chest  
Base liner-  
Print on paper, glue  
in after assembling the  
box.



Treasure Chest  
lid liner-  
Print on paper, glue  
in after assembling the  
box.

